

GC23 Drop-T Single Point Locking Latch

Features

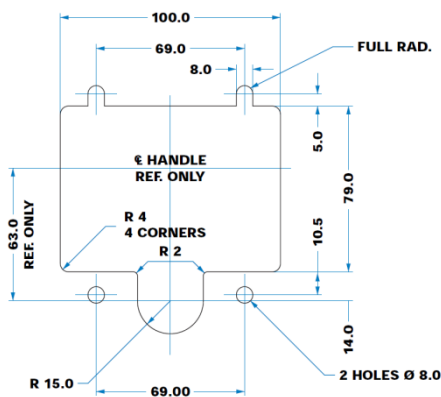
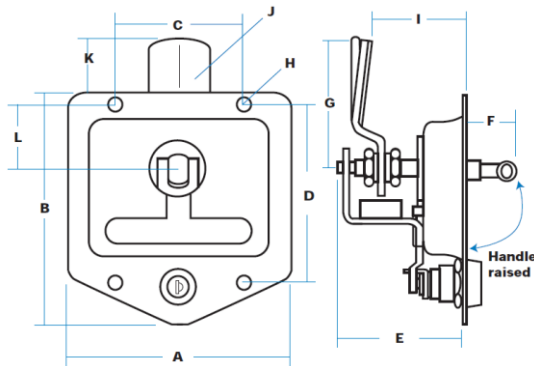
- Self-contained handle, lock and adjustable latch in a flush-fitting recess pan, with good resistance to water penetration
- Easily fixed into a simple cut-out, with shaped latch tongue giving 3 mm take-up against gasketed door edge.
- Stainless models are bright-polished for good appearance, neoprene seal under stainless 'cup' washer for weatherproofing, rubber gasket supplied as standard
- Lift handle to turn latch tongue, which is adjustable through 12 mm vertically. Locks only in centre (rest) position.
- Latch travels 90 degrees from centre against 'stops' and is 'handed' LH or RH as specified, non-reversible.
- Four holes in rim at 7.5 mm diameter for bolts or rivets. Latch bar is adjusted by 2 x M10 nuts

Material

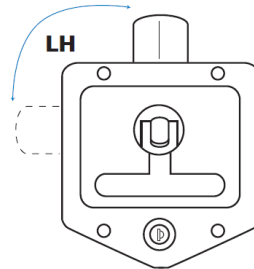
- 'T'-pan: Stainless steel 304 or mild steel to CR4
- Handle, hub and support bracket: Zinc die cast



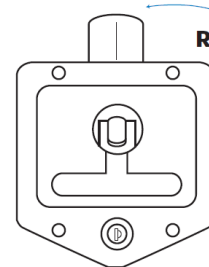
GC23-G01501
(Single-point model showing standard latch bar and adjustment nuts)



Direction of Movement



Handle turns anticlockwise to release the latch tongue



Handle turns clockwise to release the latch tongue

Part No.	Material	Key	Type	A	B	C	D	E	F	G	H	I*	J	K	L
GC23-G01501	Stainless Steel	Mixed, Different	LH	120	125	69	95	68	30	70	7.5	43 ~ 55	30 x 5 mm deep	30	34
GC23-G01502			RH												
GC23-G01503		Standard, FS880	LH												
GC23-G01504			RH												
GC23-G01511	Mild Steel	Mixed, Different	LH												
GC23-G01512			RH												
GC23-G01513		Standard, FS880	LH												
GC23-G01514			RH												

* "I" dimension can be varied using different cam pawls

Options & Add-Ons



GC23-G01501-SF
(Drop-T with stud-fixing, also showing rubber gasket and die cast support bracket)



STUD FIXING

This is an optional feature which allows the 'Drop-T' unit to be secured from beneath, with no mounting holes, screws or rivets visible from outside.

Four weld-studs (M6 x 15 mm) are fitted to the flanges in same positions as normal mounting holes, giving better appearance, more security, and preventing entry of corrosion-causing agents.

Stud-fixing is an option on all 'Drop-T' models, including mild steel and powder coated versions.

To order, add the suffix **"-SF"** to our regular part numbers.



'Drop-T' with flip-up moulded cap (G00928)



'Drop-T' with sliding weathershield cover, using lock (G08996)

WEATHERSHIELD LOCKS

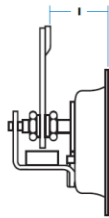
Where additional protection is desired for the lock cylinder, the 'Drop-T' can be fitted with a protective cover. Two styles are available, either a sliding die cast plate (chrome) or a moulded flip-up cap as illustrated. They can be used with all 'Drop-T' models.

To order, add the suffix **"-MC"** or **"-WS"** respectively to our regular part numbers.

Drop-T with straight latch bar

Suffix 'A'
'I' dimension variable from 29-41 mm, 'Nominal' = 35 mm

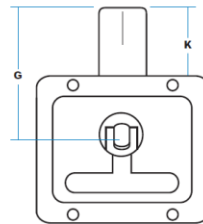
Specify LH or RH
G02068 = RH
G02069 = LH



Drop-T with long, straight latch bar

Suffix 'C'
'G' dimension is 100 mm ('K' is 60 mm)

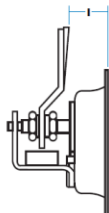
Specify LH or RH
G02431 = RH
G02432 = LH



Drop-T with 'cranked-up' latch bar

Suffix 'B'
'I' dimension variable from 21-33 mm, 'Nominal' = 30 mm

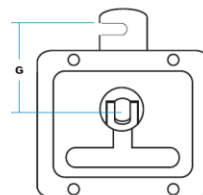
Specify LH or RH
G02070 = RH
G02071 = LH



Drop-T with straight, hooked latch bar

Suffix 'D'
'G' dimension (to hook edge) is 65 mm.

Specify LH or RH
G02058 = RH
G02059 = LH



ALTERNATIVE CAM PAWLS

Standard models use 'cranked-down' cam pawls but various options are illustrated. These are not reversible and cannot be changed after assembly. All are 5 mm thick with 3 mm 'V'-raised cam form.

Use the suffix letters shown to specify the cam pawl required.